

# The BFG vocabulary poster



Bloodbottler



Sophie



Snozzycumber



The Queen



Dream Jar



Head of Army and Air Force



The BFG

## Plant Cell

- 10-100 micrometers in length
- Typically rectangular or cubic in shape

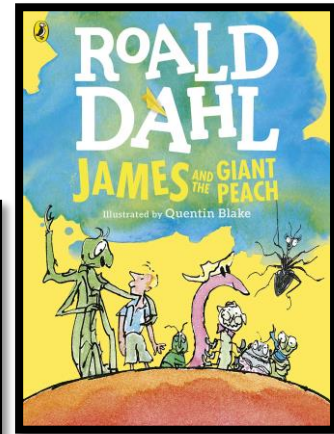
Labels: Cilia, Vacuoles, Cell membrane, Centrioles, Lysosome, Plasmodesmata, Chloroplasts, Vacuole, Lysosome, Cell wall, Cell membrane.

## Animal Cell

- 10-30 micrometers in length
- Typically round or irregular in shape

Labels: Lysosome, Cell wall, Cell membrane, Chloroplasts, Plasmodesmata.

ThoughtCo.



## Ancient Egypt Word Mat

Labels: tomb, pyramid, Sphinx, mummy, coffin, canopic jars, scarab beetle, Cleopatra, pharaoh, plough, sickle, mattock.

## Our eSafety Top Tips!

- 1** People you don't know are strangers. They're not always who they say they are.
- 2** Be nice to people like you would on the playground.
- 3** Keep your personal information private.
- 4** If you ever get that 'uh oh' feeling, tell a grown-up you trust.

Autumn  
1

CLASS FW

### Addition

total, join, both, increase, combined, plus, in all, add, all together, sum.

### Subtraction

how many more, remain, minus, decrease, or words such as fewer, shorter, farther, subtract, less than, difference, take away.

### Multiplication

multiplied by, product, times, total, by, equal groups, of, twice.

### Division

parts, goes into, quotient, each, divided by, half (or other fraction), split equally, share equally.



## Buddhism Word Mat

Labels: mandala, incense burner, Buddha, gong, dharma wheel, butter lamp, alms bowl, shrine, statue, thangka, monk, buddhism swastika.